

Specification and Function

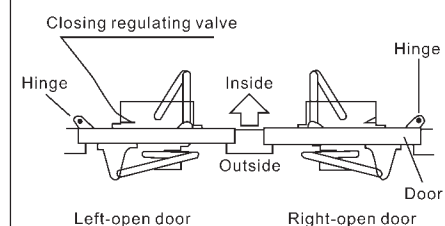
- Applicable Door Width(mm) 500–1000mm
- Applicable door weight(kg) 25–35KGS
- Adjustable Section of Closing Speed 180°–20°
- Adjustable Section of Latching Speed 20°–0°
- The door closer is suitable for installing in various doors,such as,wooden door,matal door,glass door,etc.
- The installation modes of vertical,parallel and slide-rail type all can be chosen at will.
- The door closer can be chosen to stop or unstop at will.
- Continuous adjustment of closing and latching speed:the fast speed can be adjusted to within 3seconds from 90degree,slowness close can reach to 60seconds or more.

Installation Notice of Door Closer with Stop function

1. Not to adjust the gear shaft over 180 degree,otherwise,door closer will be damaged.
- 2.If regulate the gear by swinging arm to 180 degree,the gear will keep stopping. And then the gear should return to original position immediately in order not to damage door closer in the next time.
- 3.The door closer has the automatically closing function.Better not to pull door by hand.

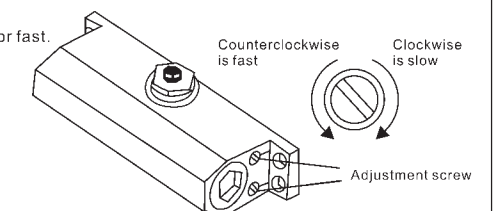
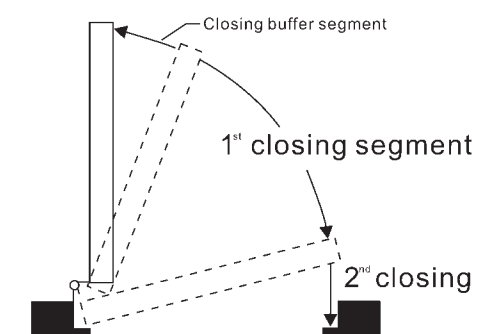
How to decide the open ing direction

The door closer is suitable for left-open door and right-open door installation. Please follow the below instruction to decide the open direction before installation.



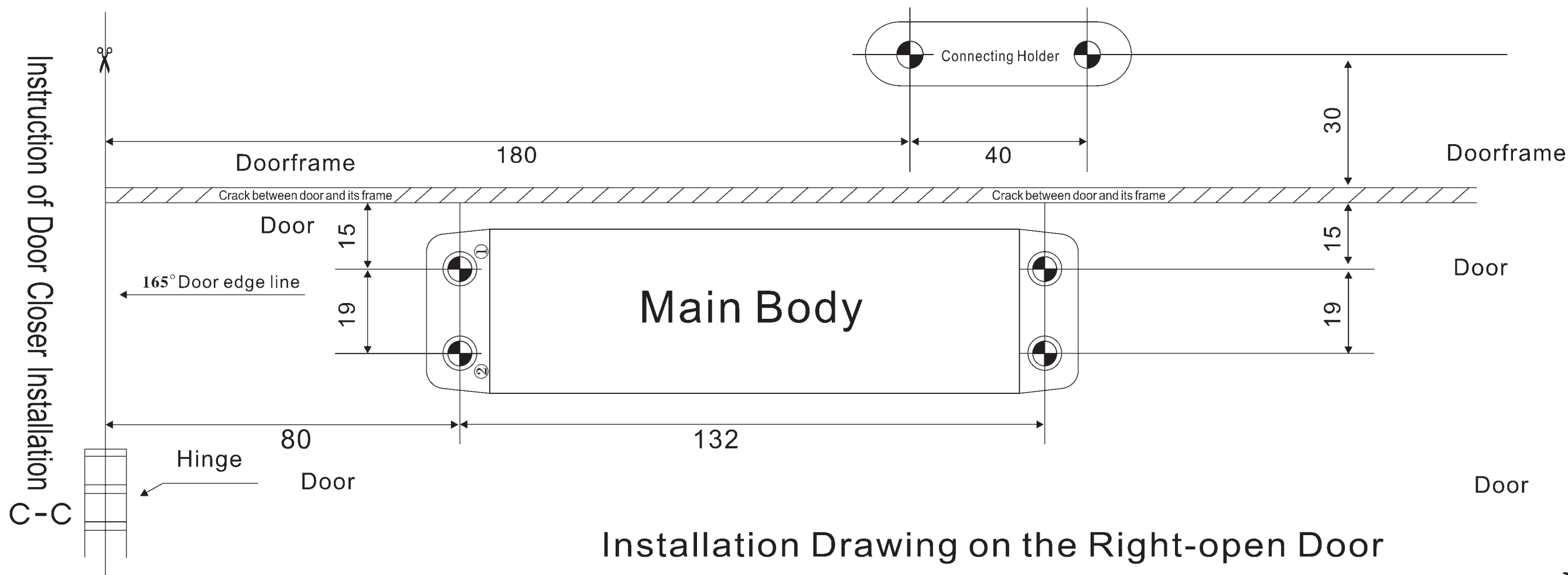
Adjustment of Closing Speed

The 1st adjustment screw controls the 1st segment closing speed
The 2nd adjustment screw controls the 2nd segment closing speed
The adjustment way is clockwise for low, and counterclockwise for fast.



Notice:

Not to turn out the adjustment screw from body surface, otherwise,it will be oil leakage and can not work anymore.



Installation Process

(The above drawing with figures is for installation, please cut down this drawing along the line.)

